

# Annual Member's Show Online Gallery Show December 2022 – January 2023



## ABOUT THIS EXHIBIT

Our annual show exhibiting work by current members. This year, in addition to this online show, we also have a separate in-person exhibit showing in the O'Hanlon & Loft Galleries.

*Artist contact information can be found at the end of the program*

## SHOW CREDITS

Erma Murphy, *Executive Director*  
Jeremy Thornton, *Curator*  
Kellan Christopher, *Program, Website support*  
Thanks to the OHCA Exhibition Committee

## SALES

Your purchase of works for sale supports both the Artist and O'Hanlon Center for the Arts!

Please email [office@ohanloncenter.org](mailto:office@ohanloncenter.org) if you would like to make a purchase. We will connect you with the artist and help make arrangements.



616 Throckmorton Ave,  
Mill Valley CA 94941  
(415) 388-4331  
[office@ohanloncenter.org](mailto:office@ohanloncenter.org)



**Kim Cardoso**  
*Lucky*

encaustic, oil and graphite on wood  
30 x 24 in. \$1200



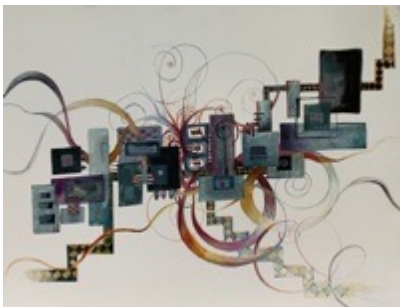
**Helen S. Cohen**  
*Dawn Chorus 5*

Acrylic, graphite and oil pastel on canvas  
56 x 66 in. NFS



**Mary Lee Cole**  
*Greenhouse Window*

iPhone Photography  
12 x 10 in. \$95



**Susan Dukow**  
*That Place on the Hill*

Acrylic on Bamboo Paper (framed)  
18 x 21 in. \$850



**KL Folgner**  
*A Mind Like a Diamond*

oil on panel  
20 x 30 in. NFS



**Ruth Gendler**  
*Peace Dove 1*

monotype  
30 x 22 in. \$900



**Ann Ginsburgh Hofkin**  
*California\_21\_0754*

digital infrared, archival pigment print  
12 x 18 in. \$700



**Diane Goldstein**  
*Santa Fe # 5*

Mixed  
55 x 47 in. \$4000



**Naomi Kubota Lee**  
*Multiverses*

Mixed mizuhiki paper, wall sculpture  
36 x 100 x 2 in. \$1500



**Sherrie Lovler**  
*This Journey to Ixtlan*

Sumi ink, watercolor, gold leaf  
30 x 11 in. \$1500



**Jacqueline Mallegni**  
*Ancestor Bones*

Rattan, handmade paper, sumi-e, kakishibu  
42 x 18 x 18 in. \$1100



**Shamy Noily**  
*Un-Still Life*

Acrylics on canvass  
14" x 14" in. NFS



**Sarah Shapiro**



**Michael Tarnoff**  
*Snow Clouds*

Photograph  
42 x 56 in. \$695



**Nina Temple**  
*Masquerade*

Ink on Paper  
30 x 22 in. \$800



**George Tomberlin**  
*Red Wall*

iPhoto  
18 x 24 in. NFS



**Sandra Wolfson**  
*Fire and Water (1 of 3)*

Mixed Media on Wood Panel  
30 x 24 in. \$3000

## PARTICIPATING ARTISTS

**Kim Cardoso**

[kimcardosoart.com](http://kimcardosoart.com)

**Helen S. Cohen**

[helenscohen.com/](http://helenscohen.com/)

**Mary Lee Cole**

**Susan Dukow**

[www.SusanDukowArt.com](http://www.SusanDukowArt.com)

**KL Folgner**

[artbyklfolgner.com](http://artbyklfolgner.com)

**Ruth Gendler**

[www.ruthgendlerstudio.com/](http://www.ruthgendlerstudio.com/)

**Ann Ginsburgh Hofkin**

[www.aghofkin.com](http://www.aghofkin.com)

**Diane Goldstein**

[www.dianegoldstein.net](http://www.dianegoldstein.net)

**Naomi Kubota Lee**

[NaomiLeeGallery.com](http://NaomiLeeGallery.com)

**Sherrie Lovler**

[artandpoetry.com](http://artandpoetry.com)

**Jacqueline Mallegni**

[www.mallegni.com](http://www.mallegni.com)

**Shamy Noily**

**Sarah Shapiro**

**Michael Tarnoff**

[michaeltarnoffart.com](http://michaeltarnoffart.com)

**Nina Temple**

[ninatempleart.com](http://ninatempleart.com)

**George Tomberlin**

[instagram.com/geotomberlin](https://instagram.com/geotomberlin)

**Sandra Wolfson**

[sandrawolfsonartist.com](http://sandrawolfsonartist.com)